

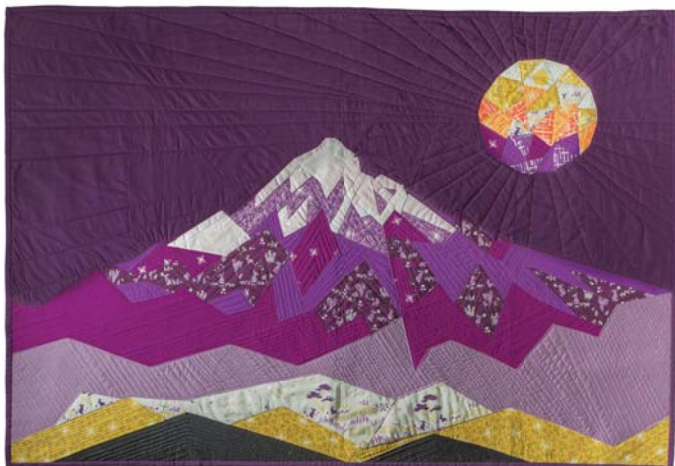
Foundation Paper Piecing Construction + Deconstruction

with Violet Craft



Supply List

drawing tools	pencil, eraser, color pencils or markers
scissors	some prefer separate scissors for paper and fabric cutting
rotary cutter	I use a 45 mm rotary cutter. Should be larger than 20mm.
personal cutting mat	I use a 14" spinning mat. You will need at least a 12" square mat.
quilting ruler	I use 12" Add-A-Quarter Plus ruler. At least 12" ruler with 1/4" lines will work. You may also want a longer quilting ruler.
seam ripper	This is a necessary part of foundation paper piecing. Trust me :)
thread	I prefer Wonderfil DecoBob . I will have this thread and other with me to sample.
seam roller	I use my Violet Craft seam roller and no iron. This is optional.
sewing machine	An open toe foot is nice. Standard foot is fine.
fabric	<p>Fabric requirements for the original Mt. Hood quilt are to the right for reference and size guidance.</p> <p>Consider your own aesthetic and the questions posed about your mountain. What time of year is it? What colors do you see on your mountain? Are there animals, flowers or other things there? How are your trees? Is there water? Snow? Bare earth? How is your sky? Is the moon out or the sun? Are there stars or birds or other?</p> <p>Bring a selection of fabrics that answer those questions. Students are encouraged to share and partake in the stash I will bring with me.</p>



Mt. Hood Original Colorway

		Haystack Gold	1/8 yard	moon/sun only
		Calico Toss Melon	1/8 yard	moon/sun only
		Haystack Poppy	1/8 yard	moon/sun only
		Haystack Orchid	1/8 yard	moon/sun only
		White	1/4 yard	mountain moon/sun
		Pink	1/4 yard	mountain
		Calico Toss Wisteria	1/4 yard	mountain
		Calico Toss Jewel	1/4 yard	mountain moon/sun
		Magenta	1/3 yard	mountain moon/sun
		Frolic Plum	1/4 yard	mountain
		Cerise	1/3 yard	mountain
		Lupine	1/2 yard	mountain
		Honey Hill Cloud	1/4 yard	mountain moon/sun
		Calico Toss Gold	1/4 yard	mountain moon/sun
		Black	1/4 yard	mountain
		Eggplant	1-1/2 yards	background